

750

Skylight

Fixed Skylight / Fixed Multiple Skylight Milgard Aluminum Window

750
SERIES
ALUMINUM



The 750 Series Skylight has been specifically designed to provide maximum thermal efficiency by incorporating a special polyurethane barrier between the inside and outside frame components. This thermal break combined with insulating glass options and weather tight seals make the 750 Series a high performance skylight for use in both single and multi-lite configurations.

Milgard's Aluminum windows, doors, and skylights carry a Full Lifetime Warranty to the original single family homeowner covering both materials and labor. The Milgard Full Lifetime Warranty is fully transferrable up to 10 years. For complete warranty details visit milgard.com

Commercial, apartment, multi-family, and co-housing projects are covered by a 10-year warranty from date of manufacture, covering materials and labor, including the glazing unit.

Fixed Skylight / Fixed Multiple Skylight Milgard Aluminum Window

CONFIGURATIONS

Standard 750 Skylights are available in single or multi-lite options in 2', 3', 4' widths and in even feet up to 8' in length (maximum 16 Sq. Ft. per lite.)

In addition to standard sizes, special sizes using combinations of segments, can be constructed up to 10 feet long. Consult the nearest Milgard location for special shapes and sizes over 30 square feet, and for information on ridge or gable applications.

The 750 Series may be pre-glazed up to 25 square feet, but must be field set if larger, due to weight considerations.

COMPONENTS

FRAME

Frame components are made from 6063-T5 aluminum alloy with a structural wall thickness of .109". The 750 Series utilizes a thermal break for added insulation value. The poured-in polyurethane insulator is approximately 1/4" wide at the most narrow point and is used in all frame members. The frame is available in bronze anodized finishes with a standard .4 mil coating thickness.

The 750 Series is designed for clean lines and high visual appeal with maximum glass exposure. Its' precisely mitered corners provide strength and a detailed appearance with equal margins on all sides. Wide screw spacing on the mechanically joined corners ensure a rigid connection with a consistent dimension. All corners are caulked with butyl sealant for added protection from the weather.

Multi-lite installations will utilize a support tube or "rafter" for support. Depending on the size and configuration, a standard 1 1/4", 3" or 5" deep mullion will be used. (Ridge and gable skylights are custom fabricated and are welded together at the peak and on common frame members.)

INSTALLATION-FIN

The frame measures 5" in height, of which 3" sit above the curb mount. The bottom 2" serve as a flashing leg and installation fin.

WEEP SYSTEM

A baffle leg extends around the perimeter of the frame, protecting the hidden circular weep holes, which run from the condensation drip leg through to the exterior. The weep is located in the base (low end) of the skylight. 2'x 4' standard skylights are double weeped for 4'x 2' applications.

CONDENSATION TRAP

A 1 1/4" leg extends around the edge of the interior frame to serve as a condensation trap where moisture can collect and

evaporate. This interior condensation trap is weeped to the outside for complete drainage.

GLAZING MATERIAL

AAMA approved glazing tape adheres the bottom lite of the 1" overall unit to the frame. The top lite is sealed against the frame with a compressed, vinyl bulb seal for weather tight performance. Rigid vinyl setting blocks are used to support the unit above the base of the frame, preventing glass slippage and glass-to-metal contact.

OPTIONS

GLASS

Refer to Glass Section

TEST STANDARDS

See Test Data Section

INSTALLATION

The 750 Series Skylight fits over a raised curb in the roof rather than inside a rough opening like most windows. This curb should rise a minimum of 4" from roofing material and be constructed so its outside dimensions are 1 1/2" wider in total than the nominal size of the Skylight when nominal 2X curb material is used. The curb top must be angled to provide a minimum 2 1/2" (12 degree) pitch for adequate drainage.

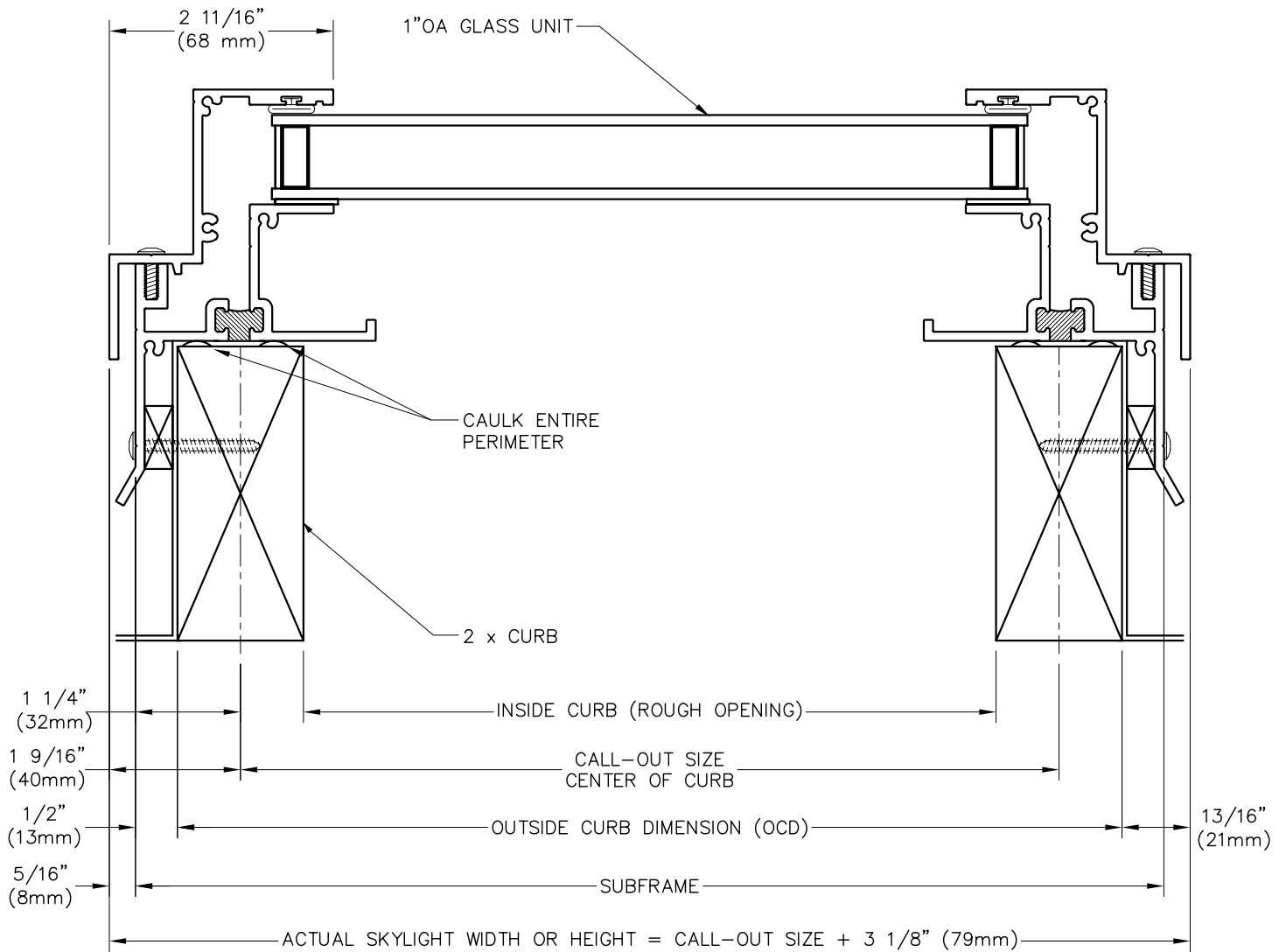
The Skylight must be oriented with weep holes on the lowest side. Wood shims should be used at each installation hole to square the Skylight and provide "backing" for secure screw attachment. Skylight must be caulked at curb to eliminate water and air leaks.

NOTE: Roof flashing, shims and sealant for the curb are provided by the installer.

CAUTION: The use of petroleum based fuels or solvents as release agents in stucco wall installations or glass cleaning will chemically attack materials used in seals and other components, and voids the Milgard Full Lifetime Warranty. The use of wax based release agents is recommended.

Expanding foam for insulation purposes should not be used. Non-expanding foam or loose packed batt insulation is recommended.

750 Aluminum Assembly Drawing



Scale: 6" = 1' (1/2 scale)

Due to continual product research and development, details may be changed at any time. ©2009
Products shown are not available at all locations – confirm availability with your local Milgard representative.

750 Aluminum Assembly Drawing

750
SERIES
ALUMINUM

